

输出转速 (r/min)			5		10		15		20		25		30		40		50	
型号	速比值		输出转矩	输入功率	输出转矩	输入功率	输出转矩	输入功率	输出转矩	输入功率	输出转矩	输入功率	输出转矩	输入功率	输出转矩	输入功率	输出转矩	输入功率
	轴旋转	外壳旋转	Nm	kW	Nm	kW	Nm	kW	Nm	kW	Nm	kW	Nm	kW	Nm	kW	Nm	kW
RV20E	57	56	231	0.16	188	0.26	167	0.35	153	0.43	143	0.5	135	0.57	124	0.7	115	0.81
	81	80																
	105	104																
	121	120																
	141	140																
	161	160																
RV40E	57	56	572	0.4	465	0.65	412	0.86	377	1.05	353	1.23	334	1.4	307	1.71	287	2
	81	80																
	105	104																
	121	120																
	153	152																
RV80E	57	56	1,088	0.76	885	1.24	784	1.64	719	2.01	672	2.35	637	2.67	584	3.26	546	3.81
	81	80																
	101	100																
	121	120																
	153	152																
RV110E	81	80	1,499	1.05	1,215	1.7	1,078	2.26	990	2.76	925	3.23	875	3.67	804	4.49		
	111	110																
	161	160																
	175.28	174.28																
RV160E	81	80	2,176	1.52	1,774	2.48	1,568	3.28	1,441	4.02	1,343	4.69	1,274	5.34				
	101	100																
	129	128																
	145	144																
	171	170																
RV320E	81	80	4,361	3.04	3,538	4.94	3,136	6.57	2,881	8.05	2,695	9.41	2,548	10.7				
	101	100																
	118.5	117.5																
	129	128																
	141	140																
	153	152																
	171	170																
	185	184																
201	200																	
RV450E	81	80	6,135	4.28	4,978	6.95	4,410	9.24	4,047	11.3	3,783	13.2						
	101	100																
	118.5	117.5																
	129	128																
	154.8	153.8																
	171	170																
	192.4	191.4																

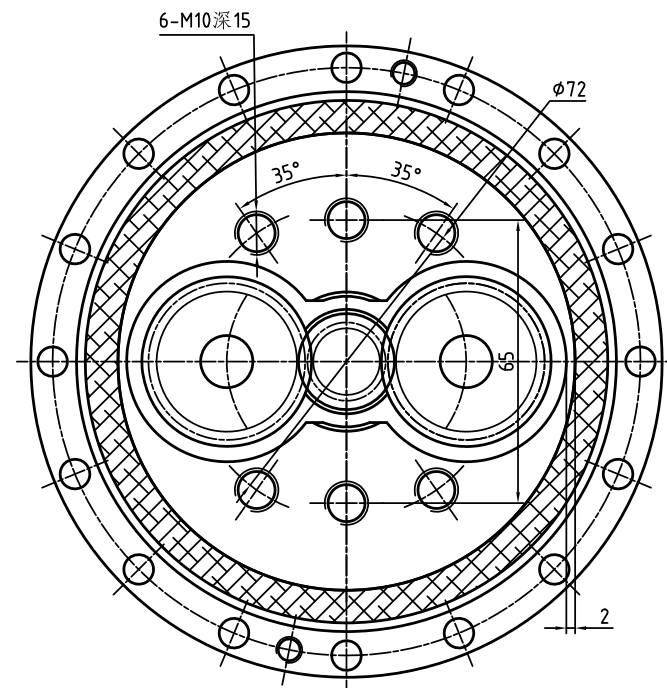
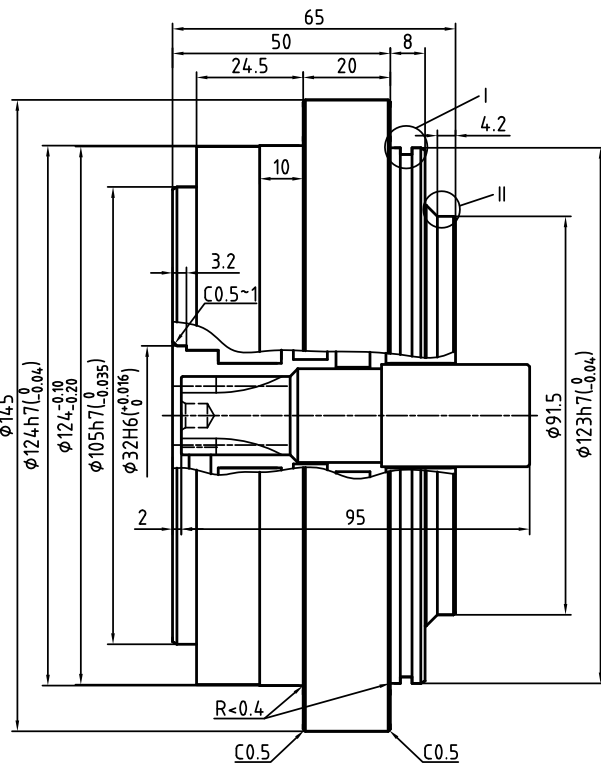
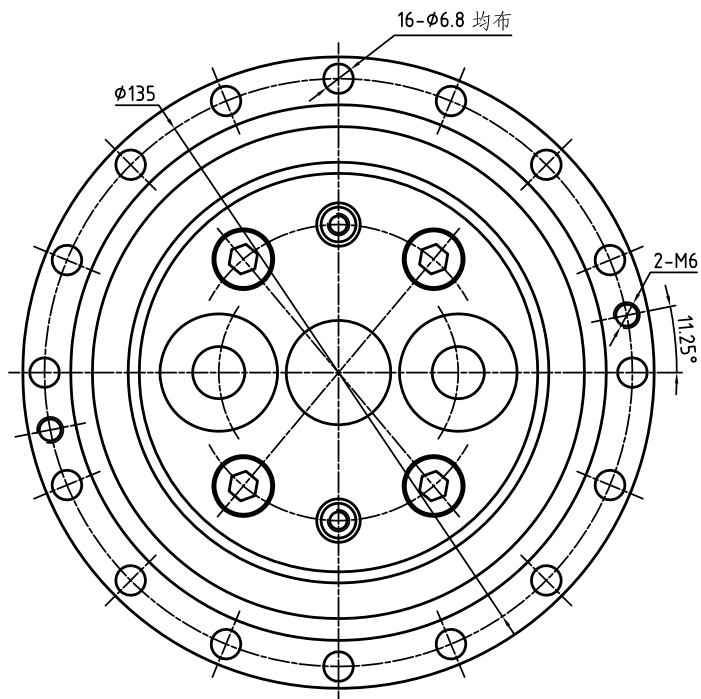
备注：1. 各减速器的速比和外形尺寸可按照用户需求定制。2. 可定制更高精度的减速器产品。3. 可为用户配带法兰等附件。

60		主轴承刚性	容许力矩	瞬时最大容许扭矩	容许最高输出转速	启动、停止时的容许转矩	瞬时最大容许转矩	传动精度	空程	扭转刚度	惯性力矩	重量
输出转矩	输入功率											
Nm	kw	Nm/arc.min	Nm	Nm	r/min	Nm	Nm	arc.min	arc.min	Nm/ arc.min	kg·m ²	kg
110	0.92	372	882	1,764	75	412	883	1	1	49	9.66×10 ⁻⁶	4.7
											6.07×10 ⁻⁶	
											4.32×10 ⁻⁶	
											3.56×10 ⁻⁶	
											2.88×10 ⁻⁶	
											2.39×10 ⁻⁶	
271	2.27	931	1,666	3,332	70	1,029	2,058	1	1	108	3.25×10 ⁻⁵	9.3
											2.20×10 ⁻⁵	
											1.63×10 ⁻⁵	
											1.37×10 ⁻⁵	
											1.01×10 ⁻⁵	
517	4.33	1,176	2,156	4,312	70	1,960	3,920	1	1	196	8.16×10 ⁻⁵	13.1
											6.00×10 ⁻⁵	
											4.82×10 ⁻⁵	
											3.96×10 ⁻⁵	
											2.98×10 ⁻⁵	
		1,470	2,940	5,880	50	2,695	5,390	1	1	294	9.88×10 ⁻⁵	17.4
											6.96×10 ⁻⁵	
											4.36×10 ⁻⁵	
											3.89×10 ⁻⁵	
		2,940	3,920	7,840	45	3,920	7,840	1	1	392	1.77×10 ⁻⁴	26.4
											1.40×10 ⁻⁴	
											1.06×10 ⁻⁴	
											0.87×10 ⁻⁴	
											0.74×10 ⁻⁴	
		4,900	7,056	14,112	35	7,840	15,680	1	1	980	4.83×10 ⁻⁴	44.3
											3.79×10 ⁻⁴	
											3.15×10 ⁻⁴	
											2.84×10 ⁻⁴	
											2.54×10 ⁻⁴	
											2.20×10 ⁻⁴	
											1.97×10 ⁻⁴	
											1.77×10 ⁻⁴	
1.60×10 ⁻⁴												
		7,448	8,820	17,640	25	11,025	22,050	1	1	1,176	8.75×10 ⁻⁴	66.4
											6.91×10 ⁻⁴	
											5.75×10 ⁻⁴	
											5.20×10 ⁻⁴	
											4.12×10 ⁻⁴	
											3.61×10 ⁻⁴	
3.07×10 ⁻⁴												

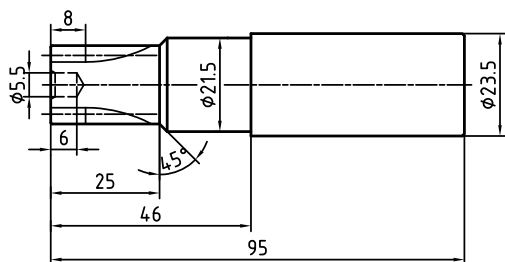
RV20E 输出轴螺栓紧固型外形尺寸

型号: RV20E - (速比) -

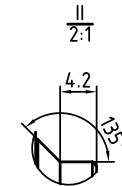
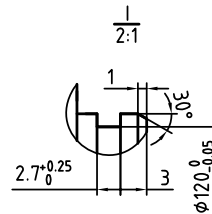
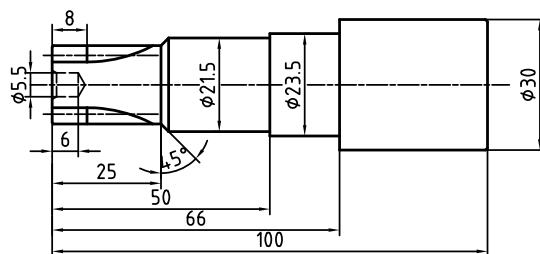
A
B



输入齿轮
型式A



输入齿轮
型式B

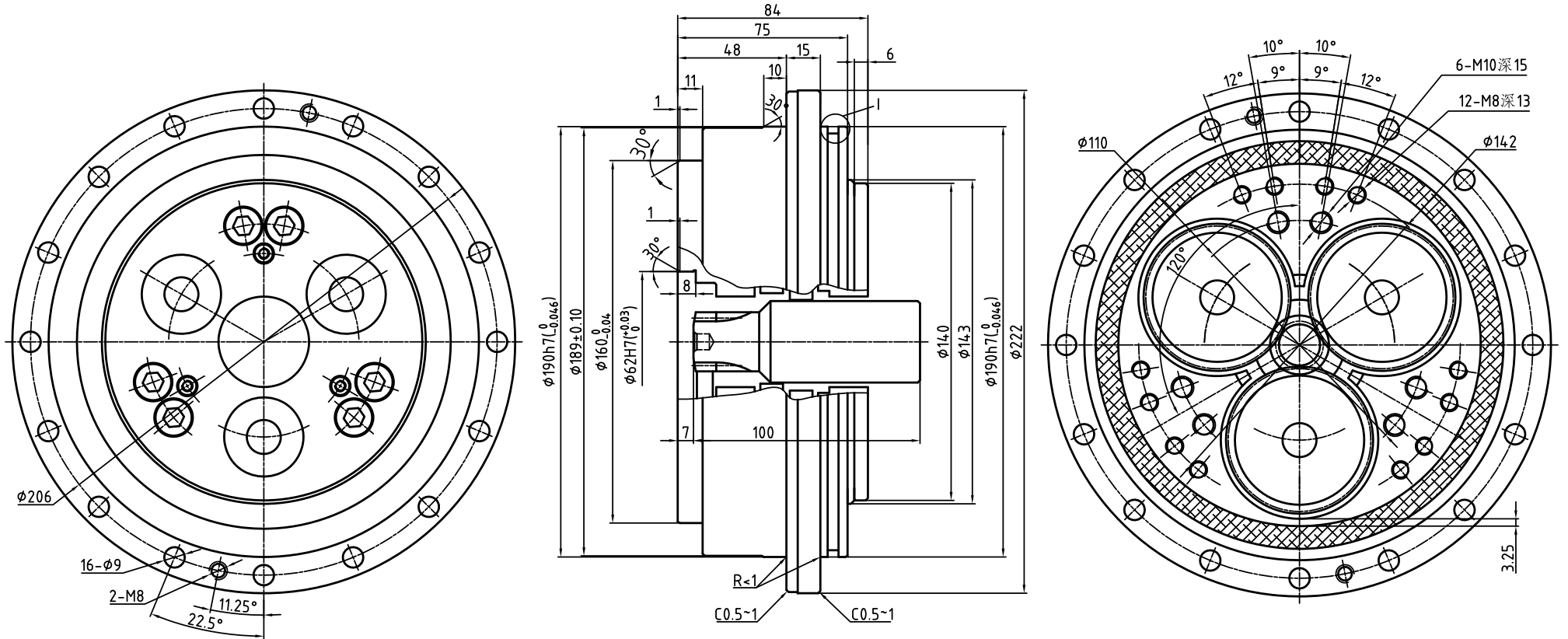


	螺栓传递扭矩	销传递扭矩	总传递扭矩
壳体连接	2,136.4Nm		2,136.4Nm
轴连接	1,195.6Nm		1,195.6Nm

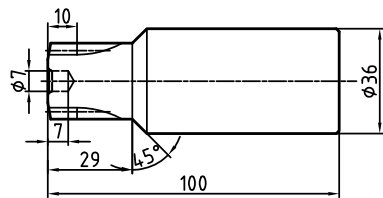
RV80E 输出轴螺栓紧固型外形尺寸

型号: RV80E - (速比) -

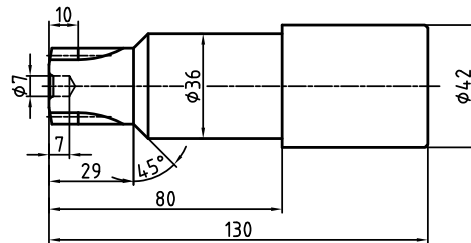
A
B



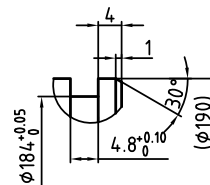
输入齿轮
型式A



输入齿轮
型式B



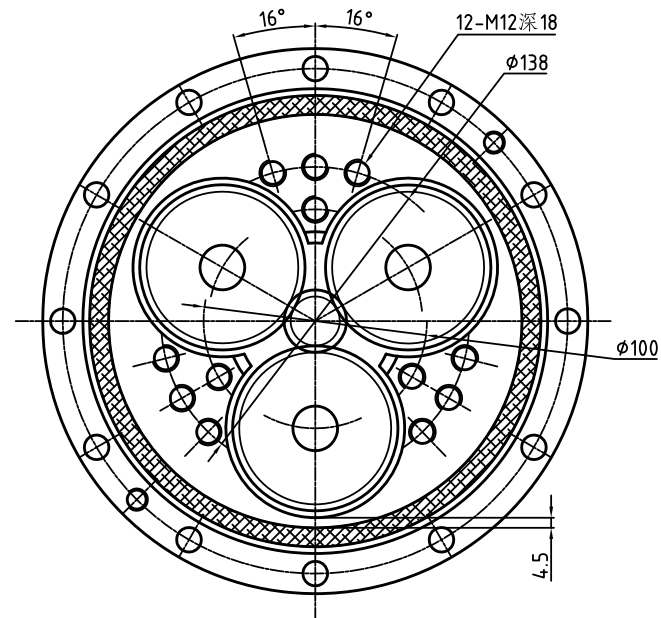
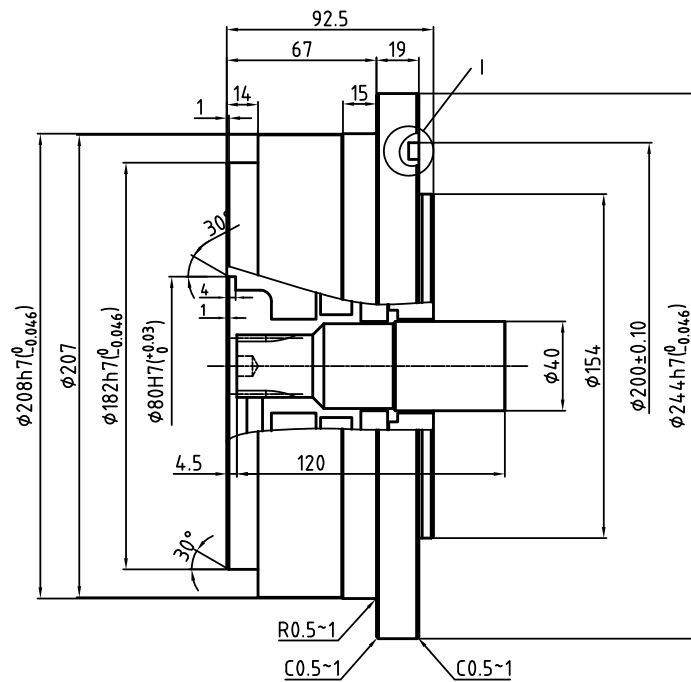
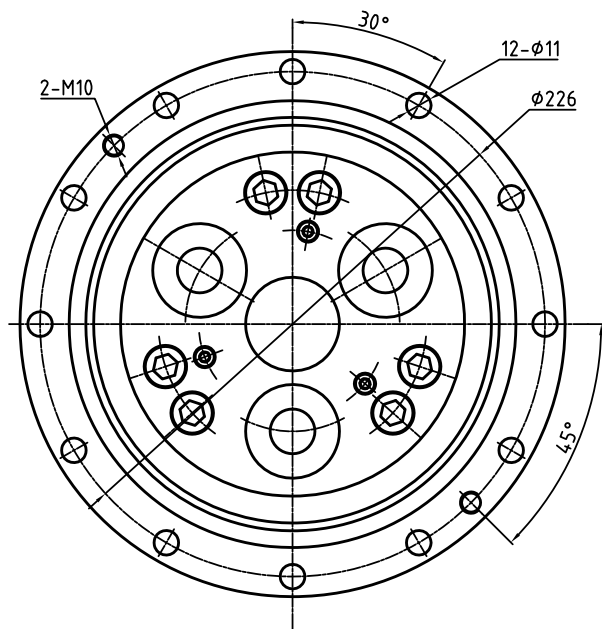
1/3:1



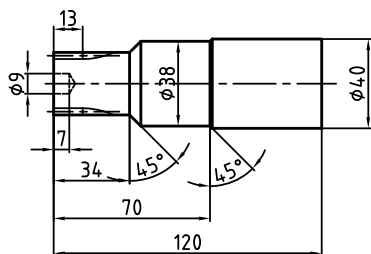
	螺栓传递扭矩	销传递扭矩	总传递扭矩
壳体连接	5,919.2Nm		5,919.2Nm
轴连接	4,939.2Nm		4,939.2Nm

RV110E 输出轴螺栓紧固型外形尺寸

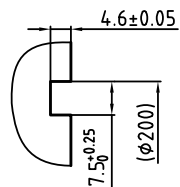
型号: RV110E - (速比) - A



输入齿轮
标准型式



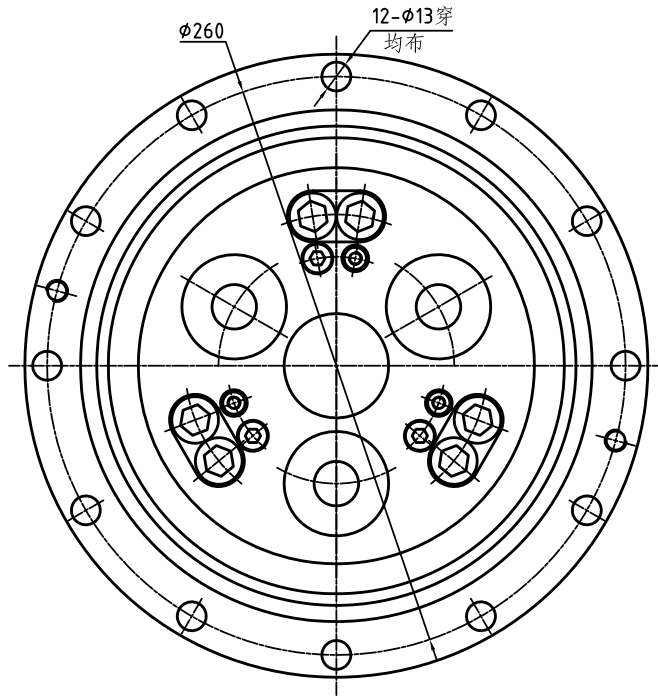
1
2:1



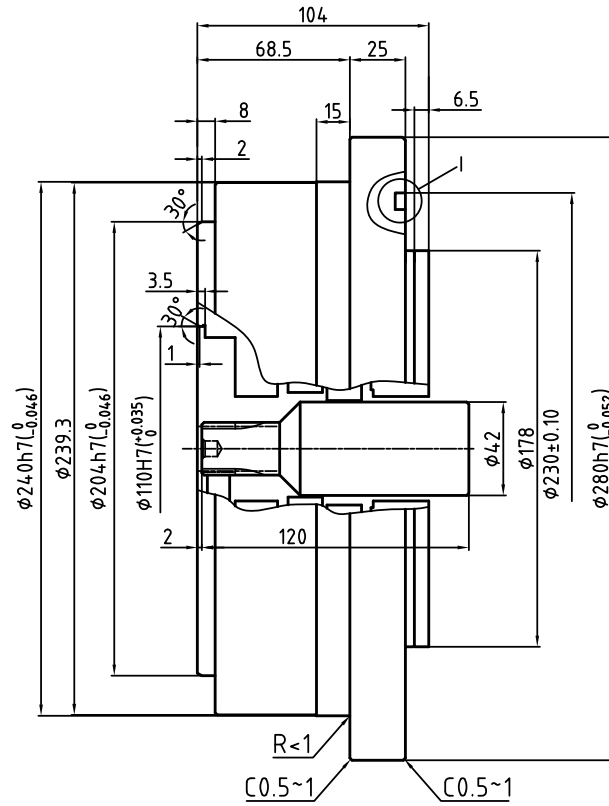
	螺栓传递扭矩	销传递扭矩	总传递扭矩
壳体连接	7,742Nm		7,742Nm
轴连接	6,370Nm		6,370Nm

RV160E 输出轴螺栓紧固型外形尺寸

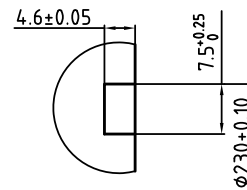
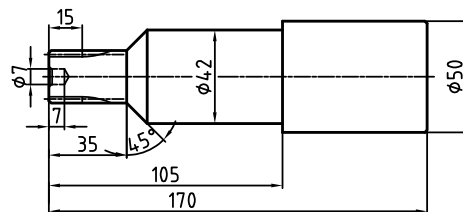
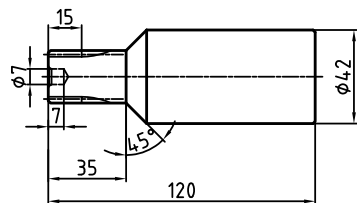
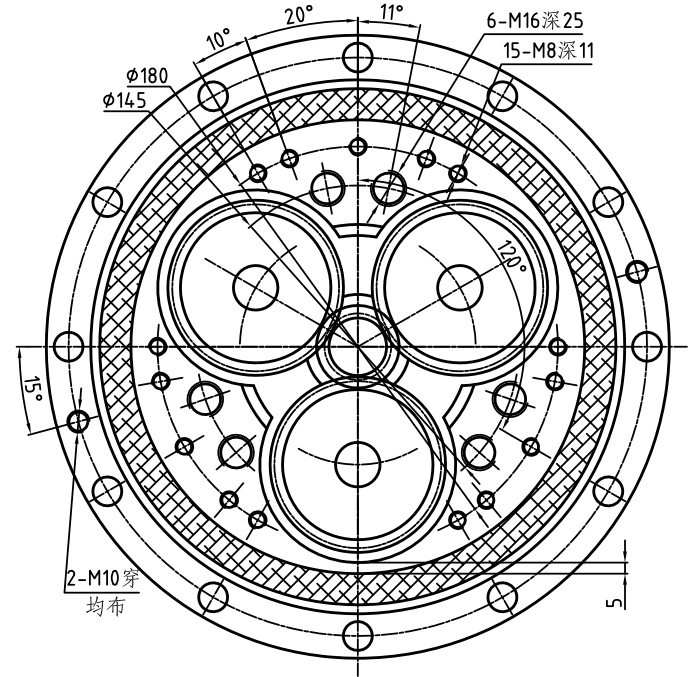
型号: RV160E - (速比) - $\frac{A}{B}$



输入齿轮
型式A



输入齿轮
型式B



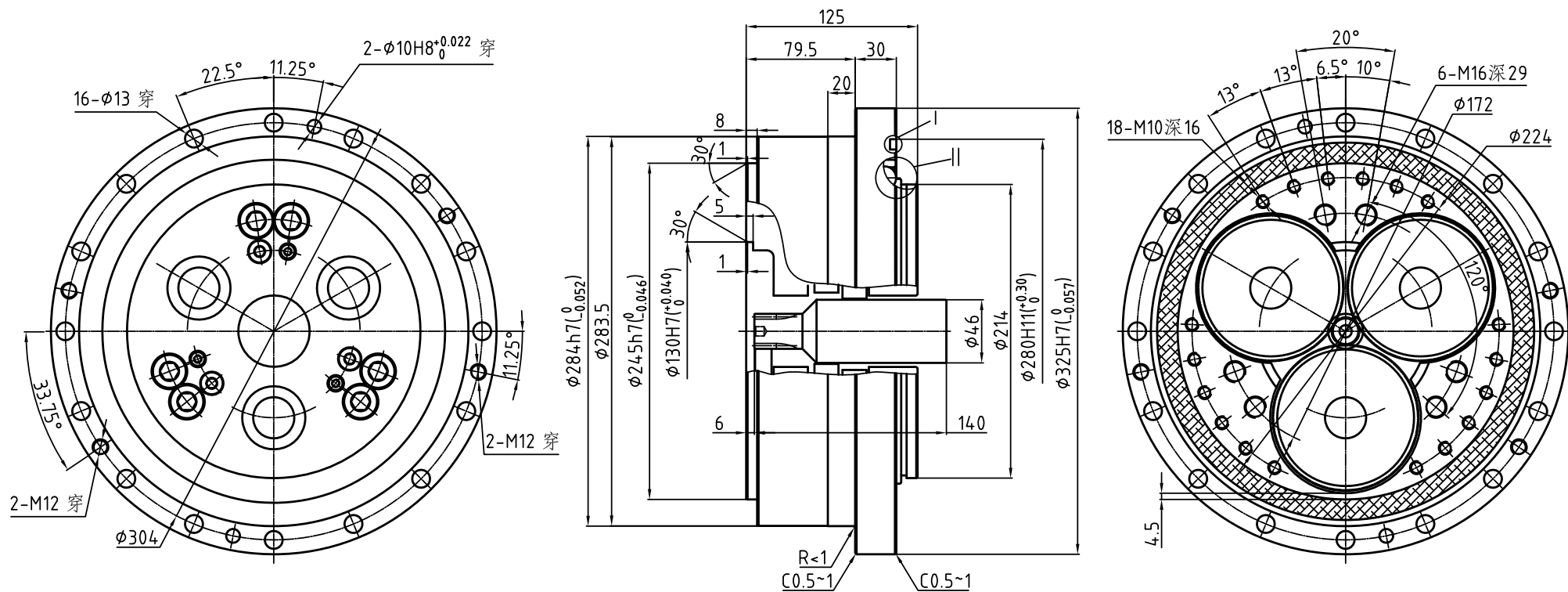
$\frac{1}{3:1}$

	螺栓传递扭矩	销传递扭矩	总传递扭矩
壳体连接	12,887Nm		12,887Nm
轴连接	11,593.4Nm		11,593.4Nm

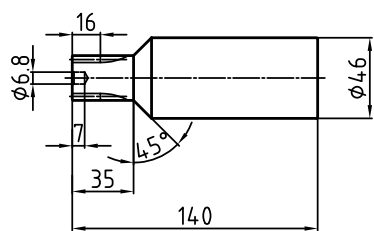
RV320E 输出轴螺栓紧固型外形尺寸

型号: RV320E - (速比) -

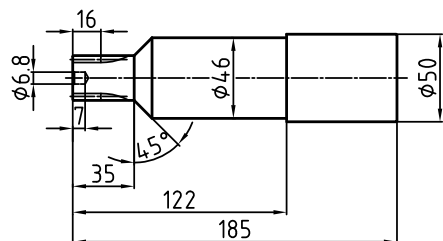
A
B



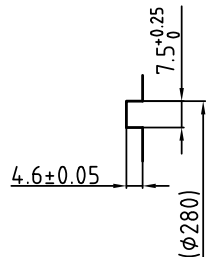
输入齿轮
型式A



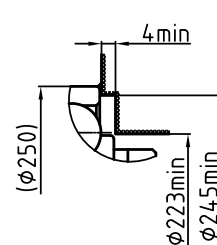
输入齿轮
型式B



1
2:1



II
2:1

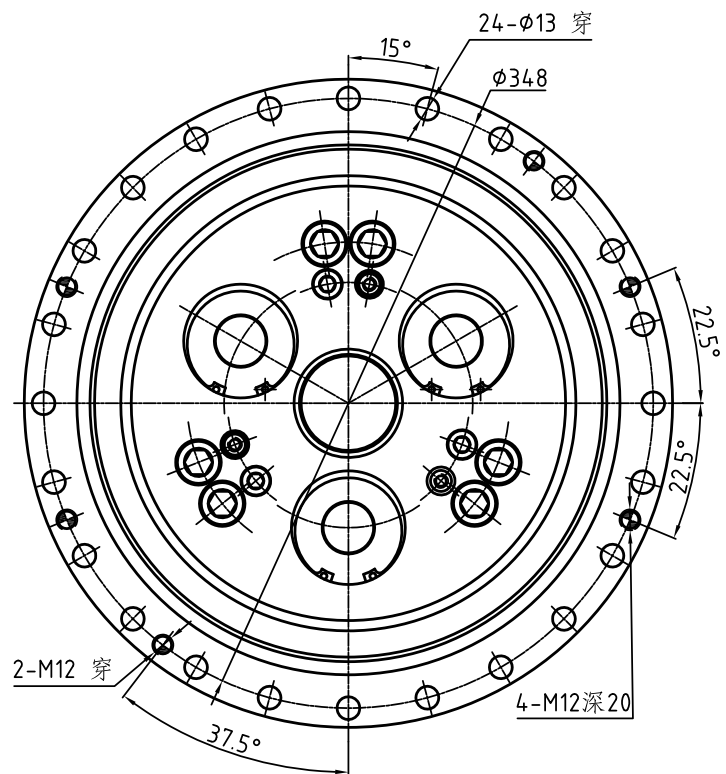


	螺栓传递扭矩	销传递扭矩	总传递扭矩
壳体连接	20,099.8Nm		20,099.8Nm
轴连接	19,521.6Nm		19,521.6Nm

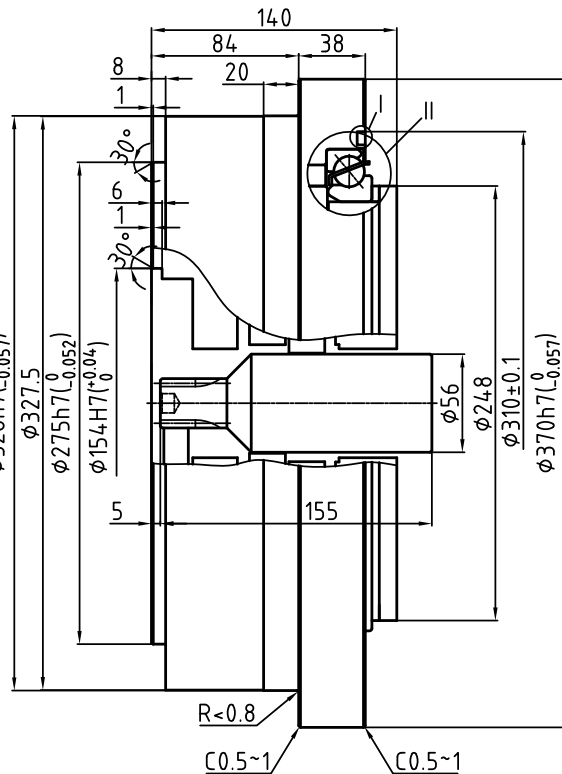
RV450E 输出轴螺栓紧固型外形尺寸

型号: RV450E - (速比) -

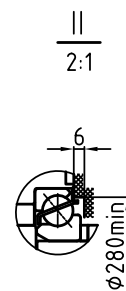
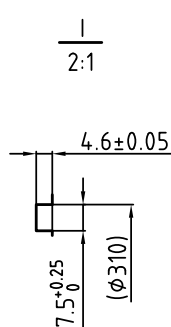
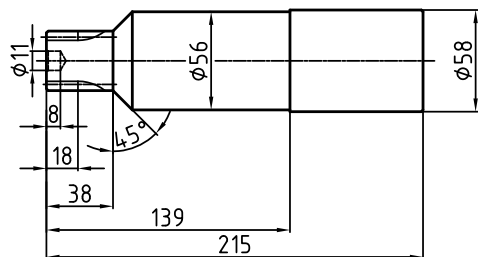
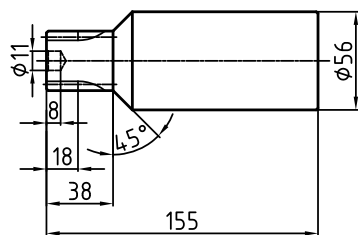
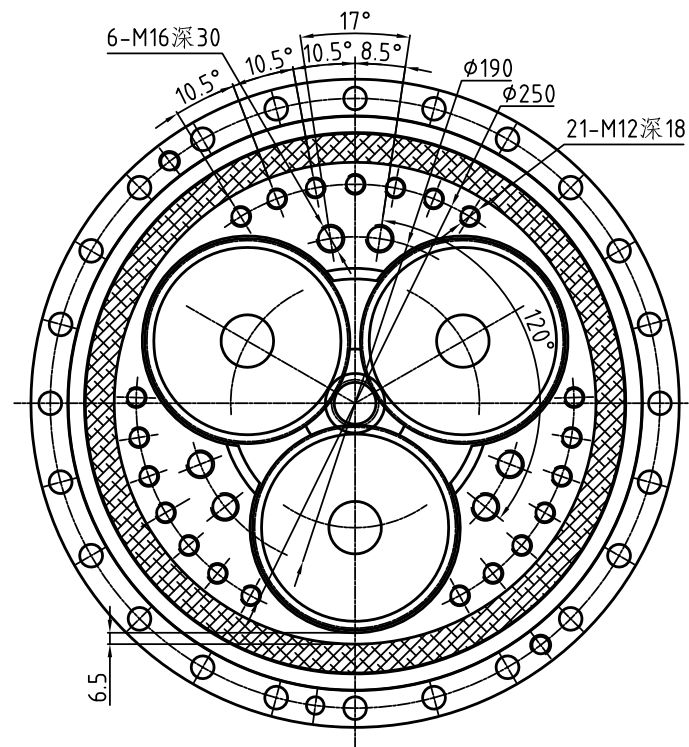
A
B



输入齿轮
型式A



输入齿轮
型式B



	螺栓传递扭矩	销传递扭矩	总传递扭矩
壳体连接	34,515.6Nm		34,515.6Nm
轴连接	30,536.8Nm		30,536.8Nm